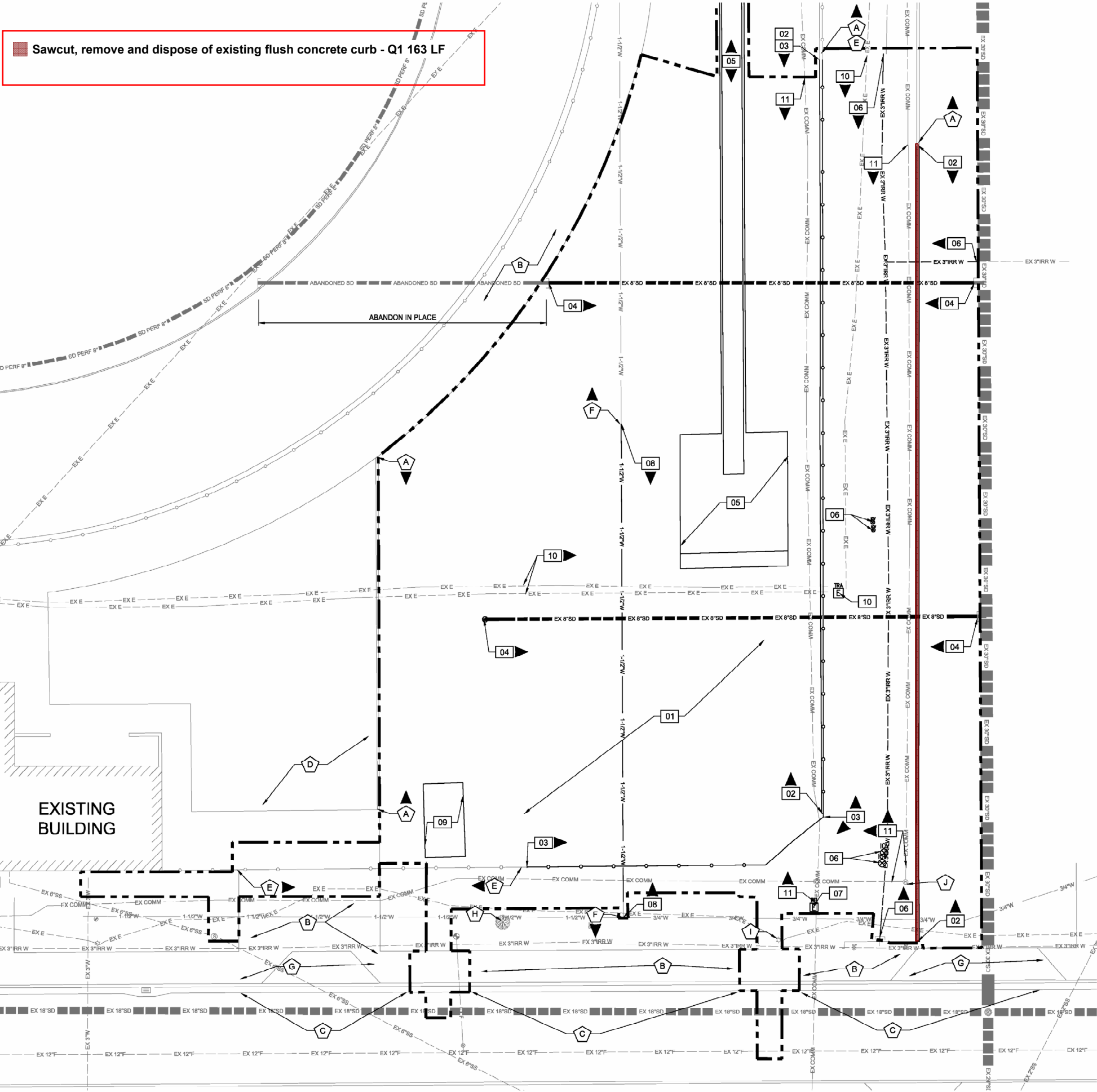


Sawcut, remove and dispose of existing flush concrete curb - Q1 163 LF



SITE DEMOLITION KEYNOTES:

- 01 REMOVE TOP 2" (MINIMUM) AND ANY ADDITIONAL DEPTH AS NECESSARY TO CLEAR EXCESSIVE ORGANICS OR OTHER UNSUITABLE MATERIAL FOR COMPACTED SUBGRADE.
- 02 SAWCUT, REMOVE AND DISPOSE OF EXISTING FLUSH CONCRETE CURB. IF THE SAWCUT LINE IS CLOSE TO AN EXISTING JOINT, REMOVE TO THE JOINT.
- 03 REMOVE AND DISPOSE OF EXISTING CHAIN LINK FENCE TO NEAREST POST.
- 04 REMOVE AND DISPOSE OF EXISTING STORM DRAIN AND STRUCTURE. PLUG CONNECTION POINT TO MAINLINE. CONTRACTOR TO PROTECT IN PLACE THE EXISTING STORM DRAIN MAINLINE.
- 05 REMOVE AND DISPOSE OF EXISTING POLE VAULT AND RUNWAY.
- 06 RELOCATE EXISTING IRRIGATION VALVES AND PIPES IN CONFLICT WITH NEW BUILDING.
- 07 RELOCATE EXISTING COMMUNICATION PULLBOX IN CONFLICT WITH NEW BUILDING.
- 08 REMOVE AND DISPOSE OF EXISTING 1-1/2" WATER LINE.
- 09 REMOVE AND DISPOSE OF EXISTING CONCRETE PAD.
- 10 RELOCATE EXISTING ELECTRICAL LINES IN CONFLICT WITH NEW BUILDING. CONTRACTOR TO COORDINATE WITH SRP PRIOR TO CONSTRUCTION. EXISTING ELECTRICAL TRANSFORMER WILL BE RELOCATED PER SRP PLANS.
- 11 UTILITY PROVIDER TO RELOCATE EXISTING COMMUNICATION LINES IN CONFLICT WITH NEW BUILDING.

PROTECT IN PLACE KEYNOTES:

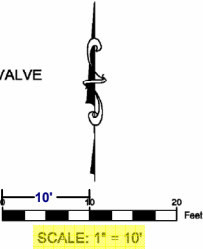
- A PROTECT IN PLACE EXISTING FLUSH CURB.
- B PROTECT IN PLACE EXISTING SIDEWALK.
- C PROTECT IN PLACE EXISTING VERTICAL CURB AND GUTTER.
- D PROTECT IN PLACE EXISTING ASPHALT PAVEMENT.
- E PROTECT IN PLACE EXISTING 3' CHAIN LINK FENCE.
- F PROTECT IN PLACE EXISTING 1-1/2" WATER LINE.
- G PROTECT IN PLACE EXISTING PEDESTRIAN ACCESS RAMP AND DRIVEWAY.
- H PROTECT IN PLACE EXISTING TREE.
- I PROTECT IN PLACE EXISTING LIGHT POLE AND FIXTURE.
- J PROTECT IN PLACE EXISTING COMMUNICATION MANHOLE.

GENERAL DEMOLITION NOTES

- THE CONTRACTOR SHALL PROTECT ALL EXISTING UTILITIES NOT SPECIFICALLY CALLED OUT FOR REMOVAL UNTIL WHICH TIME THE CONTRACTOR HAS DETERMINED THAT A DIRECT CONFLICT EXISTS WITH THE CONSTRUCTION OF ANY NEW FACILITIES. THE CONTRACTOR SHALL THEN BE RESPONSIBLE FOR REMOVING OR RELOCATING ANY SUCH UTILITIES.
- THE CONTRACTOR SHALL VERIFY THAT ALL EXISTING IMPROVEMENTS ARE SHOWN.
- THE EXISTING TOPOGRAPHIC INFORMATION AND UNDERGROUND UTILITIES SHOWN ON THESE PLANS WERE COMPILED FROM THE BEST AVAILABLE DATA INCLUDING GROUND SURVEYS AND AS-BUILT PLANS. THE ENGINEER MAKES NO GUARANTEE THAT THE UNDERGROUND UTILITIES SHOWN COMPRISE ALL SUCH UTILITIES IN THE AREA, EITHER IN SERVICE OR ABANDONED.
- THE CONTRACTOR SHALL BE RESPONSIBLE FOR DETERMINING THE EXACT DEPTH, SIZE, AND LOCATION OF ALL UTILITIES PRIOR TO COMMENCEMENT OF WORK.
- THE CONTRACTOR SHALL VERIFY CRITICAL ELEVATIONS USING THE BENCHMARK PROVIDED BY THE SURVEYOR PRIOR TO CONSTRUCTION. ANY DISCREPANCIES SHALL BE BROUGHT TO THE SURVEYOR'S AND ENGINEER'S ATTENTION.
- PROTECT ALL EXISTING UNDERGROUND STORM DRAINS, WATER LINES, ELECTRICAL LINES, AND OTHER UTILITIES THAT ARE NOT SPECIFICALLY CALLED OUT FOR REMOVAL.

DEMOLITION LEGEND

	LIMIT OF WORK
	ELECTRIC TRANSFORMER
	ELECTRIC PULL BOX
	ELECTRIC PANEL
	LIGHT POLE
	VAULT (UNKNOWN)
	FLAG POLE
	GRATE
	DRY WELL
	IRRIGATION CONTROL VALVE
	FIRE HYDRANT
	WATER METER
	CHAIN LINK FENCE
	BLOCK WALL
	EXISTING BUILDING



605 W. KNOX ROAD,
SUITE 210,
TEMPE, AZ 85284
PH 602.635.4226

CUSD
CORE VALUES
Excellence Collaboration
Efficiency
Equity Integrity



CONSTRUCTION DOCUMENTS



REV.

BASHA HS
FIELD HOUSE

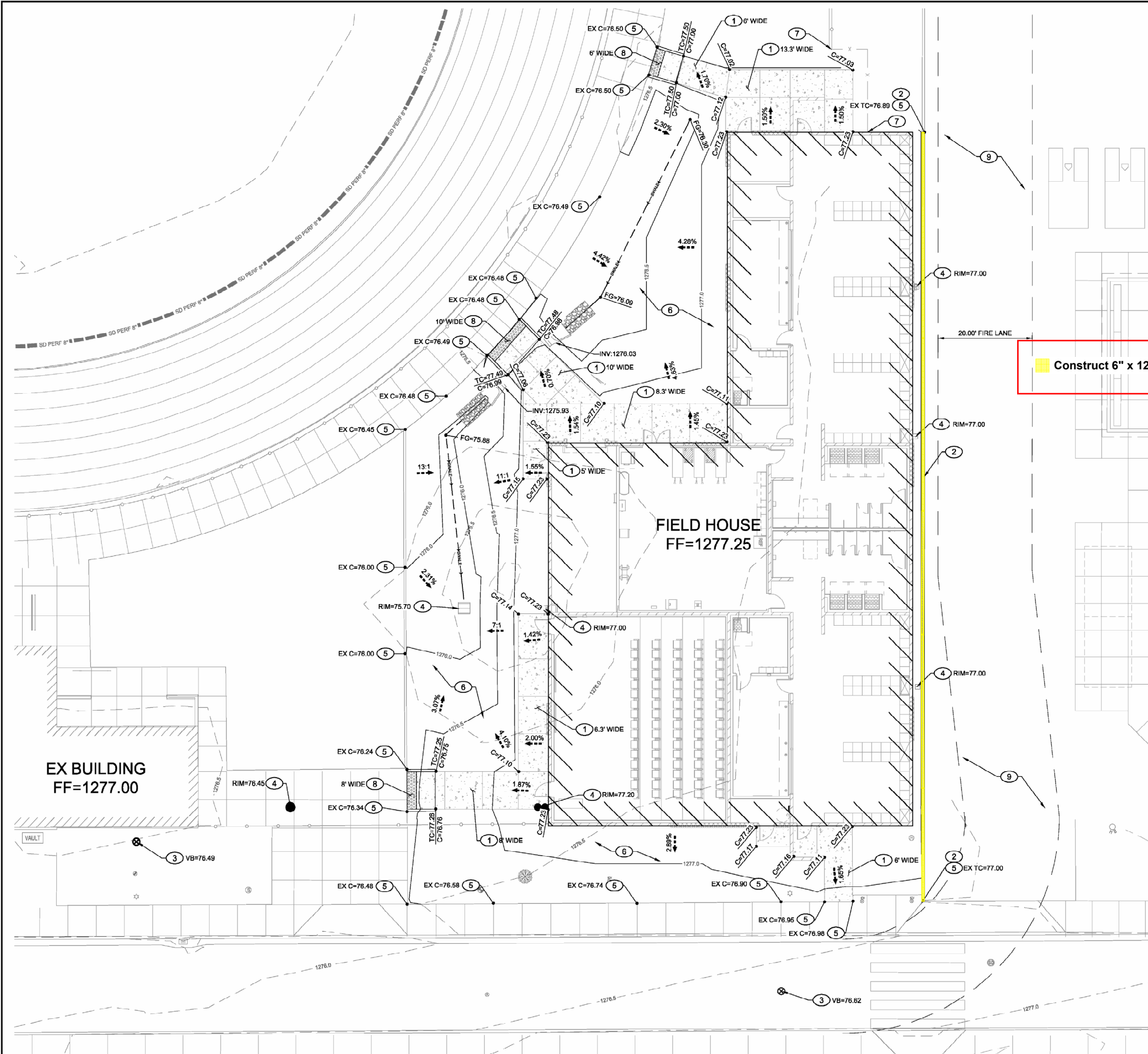
CHANDLER, AZ

DESIGNED: JP
DATE: OCTOBER 27TH, 2023
DRAWN: JSI
PROJ: 23-113
SCALE: 1" = 10'

DEMOLITION PLAN

DWG. NO.

C03.1



- PAVING KEYNOTES:**
- 1. CONSTRUCT 4" CONCRETE SIDEWALK PER MAG STD DTL 230, WIDTH PER PLAN. REFER TO ARCHITECTURAL PLANS FOR SCORING/FINISH/TEXTURE. JOINT SPACING SHALL BE 10' ON CENTER.
 - 2. CONSTRUCT 6" X 12" CONCRETE EDGE BAND PER DETAIL 1 ON SHEET C06.1.
 - 3. ADJUST WATER VALVE AND METER BOXES TO FINISH GRADE PER COC STD DTL C-307. IN UNPAVED AREAS, VALVE TO HAVE A CONCRETE COLLAR PER COC STD DTL C-317.
 - 4. ADJUST STORM AND SEWER MANHOLES, CLEANOUTS AND DRAINAGE BASINS TO FINISH GRADE PER MAG STD DTL 422-1, CONCRETE COLLAR PER COC STD DTL 401.
 - 5. CONTRACTOR TO VERIFY ELEVATION OF EXITING CURB OR SIDEWALK TIE-IN LOCATION AND MATCH EXISTING. NOTIFY THE ENGINEER OF ANY DISCREPANCIES.
 - 6. LANDSCAPE AREAS - INSTALL DECOMPOSED GRANITE, 2" MIN. DEPTH. COLOR/SIZE TO MATCH EXISTING.
 - 7. INSTALL NEW CHAIN LINK FENCE PER ARCHITECTURAL PLANS.
 - 8. CONSTRUCT DIRECTIONAL CURB RAMP PER COC STD. DET. C-257 AND C-249.
 - 9. AREA WHERE THE FIRE LANE IS DISTURBED CONTRACTOR TO REPAIR SAME IN LIKE AND QUALITY

Construct 6" x 12" concrete edge pand per detail 1/C06.1 - Q1 163 LF

LLOYD
SPORTS + ENGINEERING

605 W. KNOX ROAD,
SUITE 210,
TEMPE, AZ 85284
PH 602.635.4226

CUSD
CORE VALUES
Excellence Collaboration
Efficiency
Equity Integrity



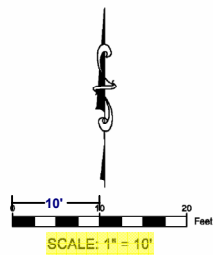
CONSTRUCTION DOCUMENTS

REV.	

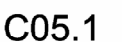
BASHA HS FIELD HOUSE

CHANDLER, AZ
DESIGNED: JP
DATE: OCTOBER 27TH, 2023
DRAWN: JSI
PROJ. 23-113
SCALE: 1" = 10'

PAVING AND GRADING PLAN
DWG. NO. **C04.1**

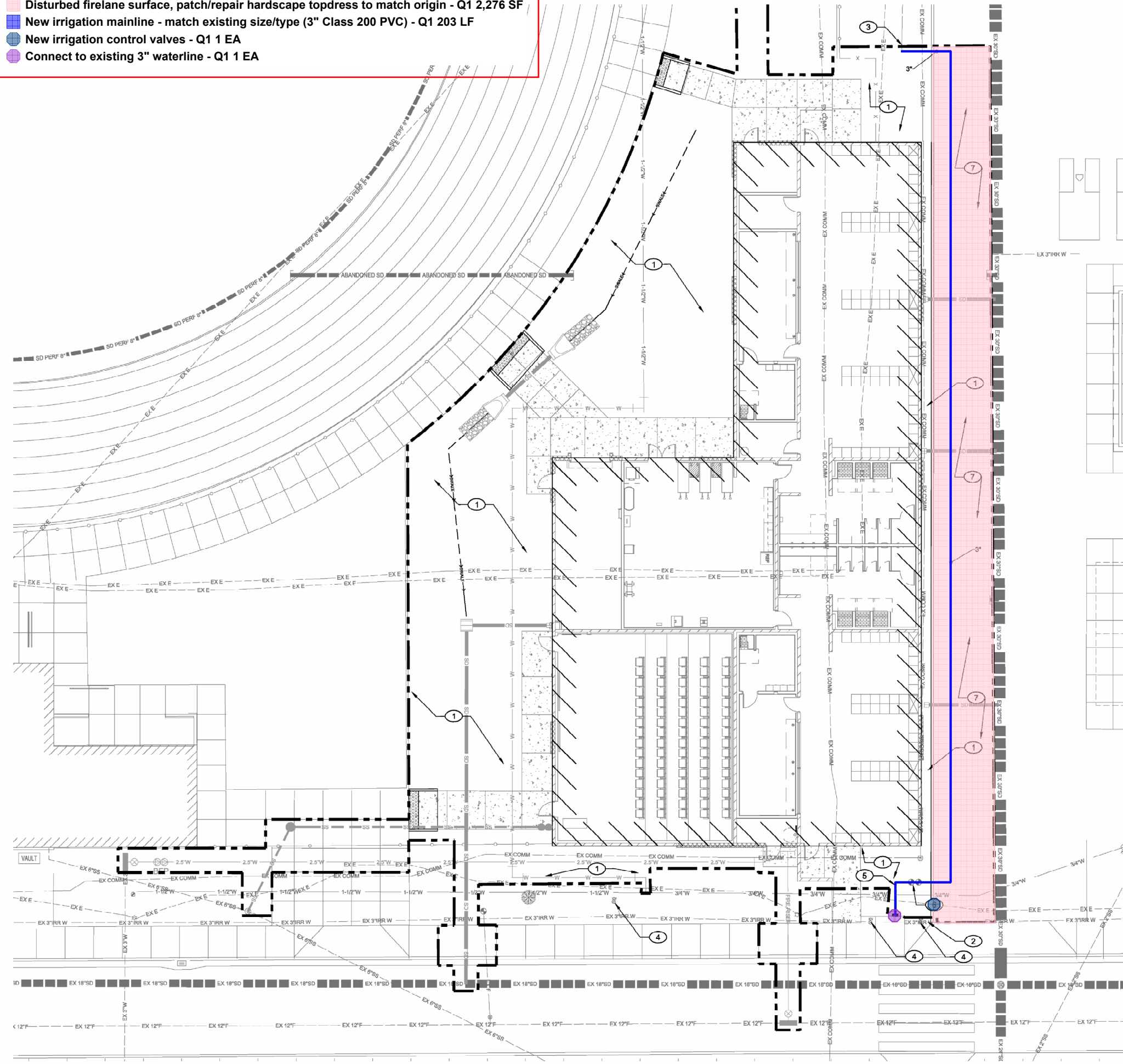


This plan document set is the sole property of Lloyd Consulting Group, LLC. No alterations to these plans, other than adding "as-built" information, are allowed by anyone other than authorized Lloyd Consulting Group, LLC employees.



This plan document set is the sole property of Lloyd Consulting Group, LLC. No alterations to these plans, other than adding "as-built" information, are allowed by anyone other than authorized Lloyd Consulting Group, LLC employees.

- Disturbed firelane surface, patch/repair hardscape topdress to match origin - Q1 2,276 SF
- New irrigation mainline - match existing size/type (3" Class 200 PVC) - Q1 203 LF
- New irrigation control valves - Q1 1 EA
- Connect to existing 3" waterline - Q1 1 EA



IRRIGATION LEGEND:

- LIMIT OF CONSTRUCTION
- IRRIGATION MAINLINE
CONNECT TO EXISTING 3" WATERLINE AT THE APPROXIMATE LOCATION
(SIZE TO MATCH EXISTING CONNECTION - 3" MINIMUM)
3" OR LARGER CLASS 200 PVC W/ FULLY RESTRAINED DUCTILE IRON FITTINGS
2 1/2" AND SMALLER SOLVENT WELD SCH 40 PVC W/ SCH 80 FITTINGS
- IRRIGATION LATERAL (SIZE TO MATCH EXISTING)
SCH 40 PVC W/ SOLVENT WELD SCH 80 FITTINGS
- REMOTE CONTROL VALVE
SIZE TO MATCH EXISTING/DISTRICT STANDARDS
IRRIGATION BOX COLOR: TAN

IRRIGATION KEYNOTES:

- 1 DECOMPOSED GRANITE - 2" MINIMUM DEPTH. SIZE/TYPE/COLOR TO MATCH EXISTING.
- 2 EXISTING MAINLINE - PROTECT-IN-PLACE.
- 3 EXISTING IRRIGATION LATERAL - PROTECT-IN-PLACE.
- 4 EXISTING VALVE BOXES - PROTECT-IN-PLACE.
- 5 NEW IRRIGATION MAINLINE - MATCH EXISTING SIZE/TYPE.
- 6 NEW IRRIGATION CONTROL VALVES
- 7 DISTURBED FIRELANE SURFACE - PATCH /REPAIR HARDSCAPE TOPDRESS TO MATCH ORIGINAL STATE. COLOR/SIZE DECOMPOSED GRANITE TO MATCH EXISTING.

IRRIGATION NOTES:

- ALL NEW IRRIGATION COMPONENTS SHALL MATCH TO EXISTING SIZE, COLOR, AND TYPE. ANY DEVIATION SHALL BE SUBMITTED TO THE ENGINEER AND OWNER FOR REVIEW AND APPROVAL PRIOR TO INSTALLATION.
- CONNECT TO EXISTING MAINLINE AT THE APPROXIMATE LOCATIONS SHOWN. FLOW AND PRESSURE MUST BE VERIFIED BY CONTRACTOR PRIOR TO CONSTRUCTION. IF PRESSURE IS LESS THAN 80 PSI AT 120 GPM NOTIFY ENGINEER IMMEDIATELY.
- CONTRACTOR TO FLUSH SYSTEM AND CONDUCT PRESSURE TEST TO CONFIRM EXISTING IRRIGATION SYSTEM HAS MAINTAINED ORIGINAL IRRIGATION WATER PRESSURE.
- ALL IRRIGATION VALVE AND PIPE SYMBOL LOCATIONS ARE DIAGRAMMATIC. DO NOT INSTALL IRRIGATION EQUIPMENT IN DIRECT CONFLICT WITH UTILITY, LANDSCAPE, OR HARDSCAPE ELEMENTS. COORDINATE LOCATION OF ALL NEW AND EXISTING UTILITIES PRIOR TO IRRIGATION INSTALLATION. CONTACT ENGINEER IMMEDIATELY IF CONFLICTS ARE LOCATED.
- EXISTING UTILITIES SHOWN ARE FOR REFERENCE ONLY. ADDITIONAL UTILITIES MAY BE PRESENT. CONTRACTOR MUST UTILIZE UTILITY LOCATION SERVICE PRIOR TO CONSTRUCTION AND TRENCH WITH CAUTION. CONTRACTOR IS RESPONSIBLE TO REPAIR OR REPLACE ANY UTILITIES DAMAGED DURING CONSTRUCTION.
- COORDINATE IRRIGATION COMPONENTS WITH PROPOSED FOOTINGS AND UTILITIES PRIOR TO CONSTRUCTION.
- CONTRACTOR IS REQUIRED TO VERIFY THAT FLOW AND AUTOMATIC CONTROL TO ALL LANDSCAPE IRRIGATION SURROUNDING THE PROJECT REMAINS FUNCTIONAL DURING AND AFTER CONSTRUCTION.
- MAINLINE RELOCATIONS MUST BE COORDINATED AND FLAGGED IN FIELD FOR ENGINEER REVIEW PRIOR TO INSTALLATION.



605 W. KNOX ROAD,
SUITE 210,
TEMPE, AZ 85284
PH 602.635.4226

CUSD
CORE VALUES
Excellence Collaboration
Efficiency
Equity Integrity



CONSTRUCTION DOCUMENTS



REV.	

BASHA HS
FIELD HOUSE

CHANDLER, AZ	
DESIGNED:	JP
DATE:	OCTOBER 27TH, 2023
DRAWN:	TML
PROJ.	23-113
SCALE:	1" = 10'

LANDSCAPE /
IRRIGATION PLAN

DWG. NO.

L1.1

